



# Computer Aided Design (CAD) Certificate

*Maximize your use of CAD, whether you are a beginner or an expert.  
Software used: AutoCAD 2007*

**REQUIREMENTS: 2 COURSES**

## COMPUTER-ASSISTED DESIGN (CAD) I

ENADM 7513 (required, 2.4 CEUs given)

CAD I is for beginning students. Topics include drawing set-up, line drawing, editing, text style creation, text placement, orthographic drawing, basic dimensioning, and block creation.

## COMPUTER-ASSISTED DESIGN (CAD) II

ENADM 7514 (required, 2.1 CEUs given)

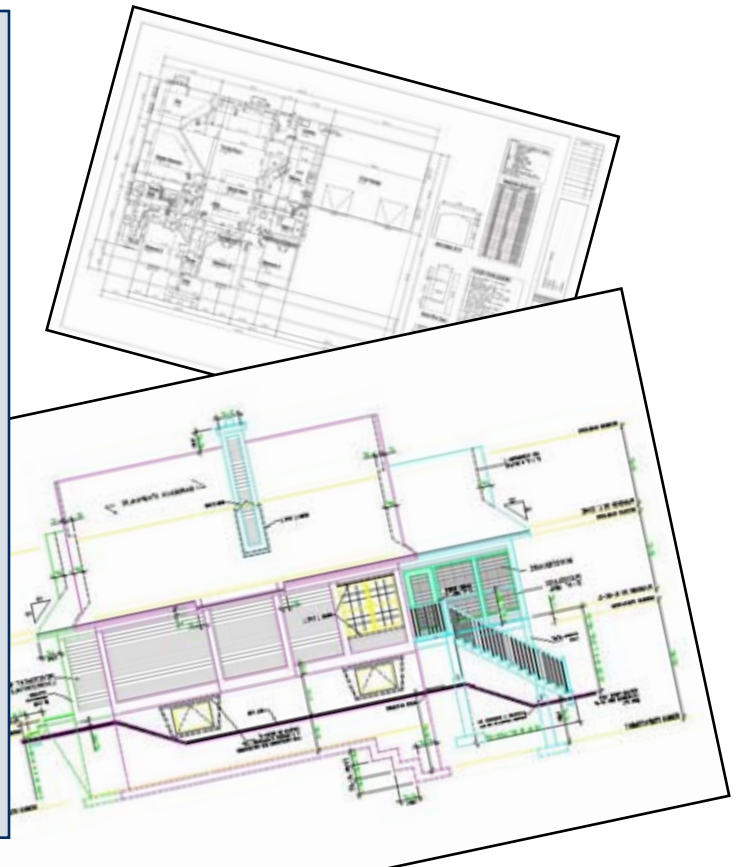
This course is for those with some experience in CAD. Topics include isometric and sectional drawings, introduction to 3-D models, Xrefs, paperspace, polylines, curve fitting, and blocks with attributes.

Prerequisite: CAD I or equivalent, or experience

### NEW OPTIONAL COURSE!

## SOLIDWORKS ESSENTIALS

Through demonstrations, tutorials, and in-class exercises, students can learn to use the SolidWorks computer-aided design software to create 3D solid models of parts. In addition, students can learn how to modify these parts, generate engineering drawings from them, and build assemblies from individual parts. This is a beginner level class for those with no prior SolidWorks experience. Students should be familiar with using a computer and handling files in Windows.



For more information, call 215-881-7389. For class times and fees, review our 2008 Course Schedules link at [www.abington.psu.edu/psasite/cel/](http://www.abington.psu.edu/psasite/cel/).